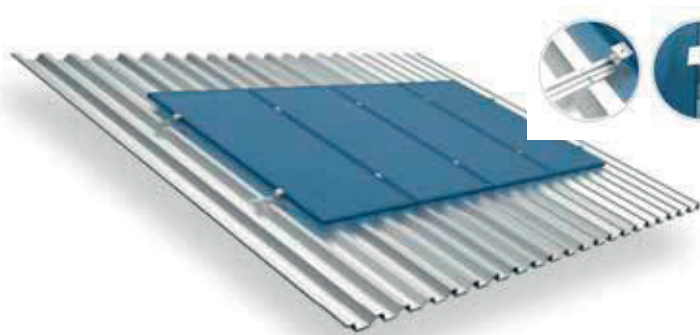




KIT DE FIXAÇÃO PARA TELHA METÁLICA 4 PLACAS

1



Perfil Plano



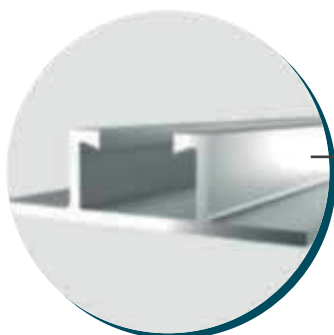
Parafuso Autobrocante



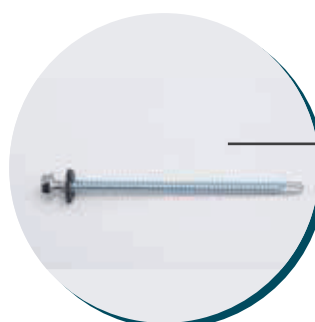
End Clamp



Mid Clamp



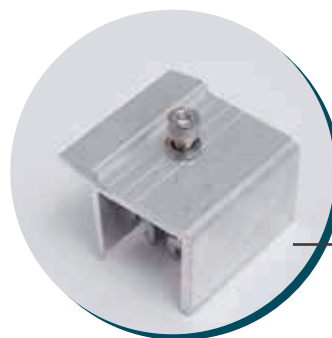
10 Perfis
de alumínio
Minitrilho 55 cm.



40 parafusos
sextavados
| Autobrocante
5,5x 2"



6 grampos
intermediários

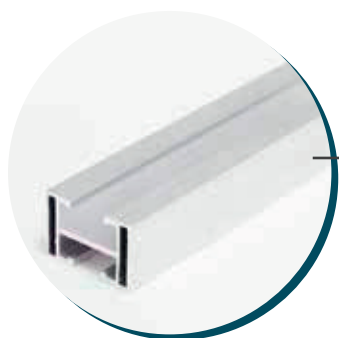
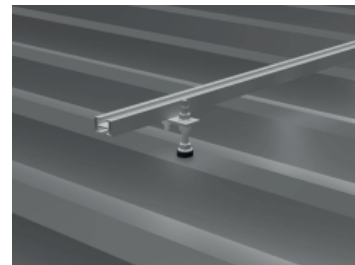


4 grampos
finais



KIT DE FIXAÇÃO PARA TELHAS FIBROCIMENTO/ FIBROMADEIRA 4 PLACAS

2



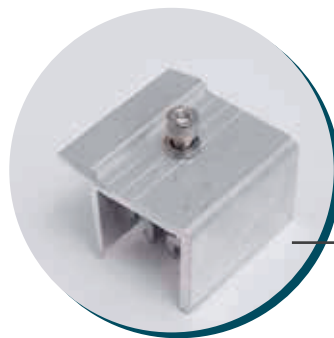
2 barras de
perfil alumínio
| trilho H com
4,20 metros.



8 hastes
| 200 mm
completos



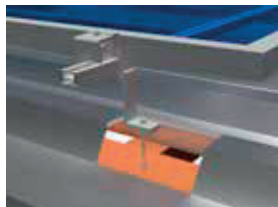
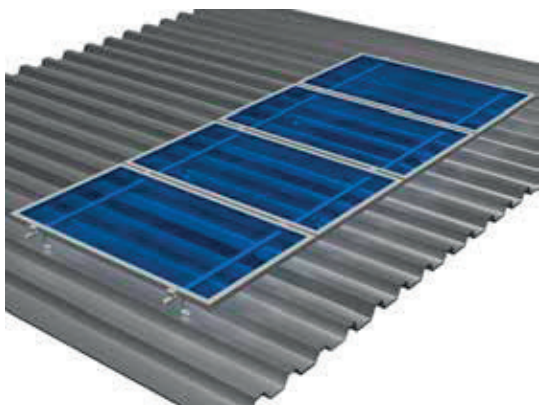
6 grampos
intermediários



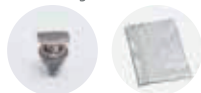
4 grampos
finais

KIT DE FIXAÇÃO PARA TELHAS ONDULADAS/ FIBROMETÁLICA 4 PLACAS

3



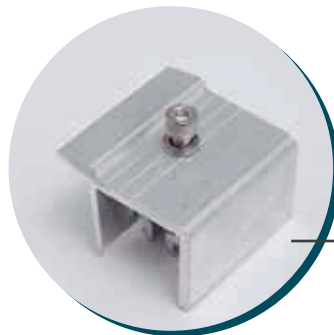
**8 ganchos
em Z completos**
| com parafusos e
manta asfáltica de
vedação



**2 barras de
perfil alumínio**
| trilho H com
4,20 metros

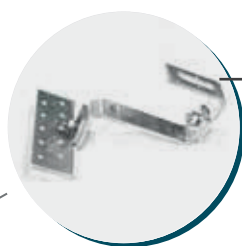


**6 grampos
intermediários**

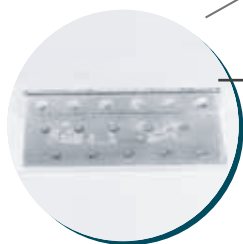


**4 grampos
finais**

KIT DE FIXAÇÃO PARA TELHA COLONIAL 4 PLACAS



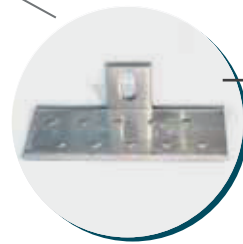
Cantoneira de
fixação



cantoneira com
furo redondo



cantoneira com
furo quadrado



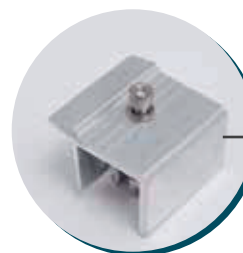
cantoneira com
furo oblongo



2 barras de
perfil alumínio
| trilho H com
4,20 metros



6 grampos
intermediários

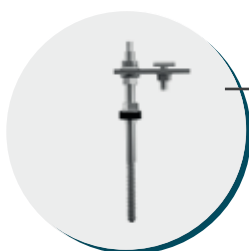


4 grampos
finais

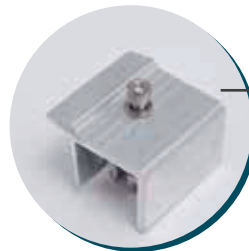




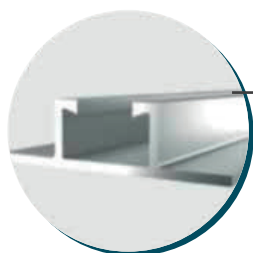
Trilho h com
4,20 metros e
2,10 metros



Hastes
200mm
completo



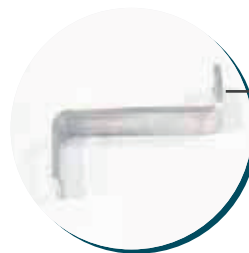
Grampo
final



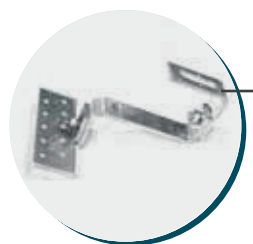
Tilho para telha
metálica 55cm



Grampos
intermediários



Gancho Z



Kit individual
para telha
colonial



Parafuso Martelo
10x30